



Instruction for use

myJunior kit

the first sectional
matrix system
for paediatric
dentistry



sectional
matrix
systems



Medical Devices Kit for professional use only - REV 01 01.2020

instruction for use

A - Description

myJunior kit: sectional matrix system for the restoration of posterior deciduous and young permanent teeth.

B - Composition

myClip Junior, myRing Junior: NiTi Ring with thermoplastic overmolding
myTines junior: thermoplastic
Silicone Tubes: silicone
LumiContrast matrices (0.04 - 3.75mm / 0.04 - 5mm): Stainless steel
Quickmat matrices (0.04, 3.75mm - 0.04, 5mm): Stainless steel
myWedge (Xsmall - Small): thermoplastic
Wood wedge (pinky - small): Maple wood

C - Indications

Restoration of posterior deciduous and young permanent teeth.

D - Contraindications

myJunior Kit is not intended to be used in the case of uncooperative young patients.

E - Side effects

There are no known side effects. Promptly report any serious incident by contacting your distributor or the manufacturer.

F - Interactions with other medical devices or products

There are no known interactions.

G - Information for the patient

No information for the patient related to the myJunior kit is necessary.

H - Shelf life

Please refer to the expiration date on the packaging

I - Preservation and storage

Store in a clean, dry environment away from moisture or excessive humidity.

L - Warnings

Due to the presence of small and sharp components, the use of a rubber dam is mandatory to avoid accidental ingestion or aspiration. Always ensure the rings using dental floss.

In case of accidental inspiration of a myJunior kit component (matrix, retaining ring and its extremities, wedge) seek immediate medical attention.

In case of ingestion of a myJunior Kit component, it is strongly recommended seeking for medical assistance and locate the ingested components. If illness develops after ingestion, consult a doctor immediately.

All Polydentia reusable Products are supplied non-sterile and must be appropriately disinfected, cleaned and sterilized before the first use. Please refer to the Cleaning, disinfection and Sterilization Instructions at www.polydentia.com.

M - Application

See the following pictograms.

N - Pack sizes available

See "Reorder now" section.

O - Disposal

Because of their composition, Matrices and wedges can not be sterilized and are therefore single use devices. Do not reuse them. Properly dispose devices contaminated with potentially infectious substances of human origin, in accordance with local regulations.

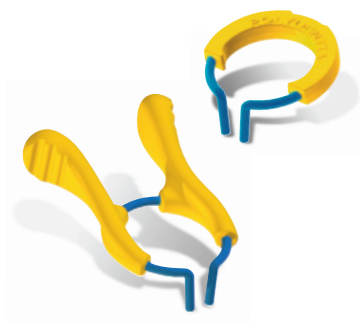
P - Ring reconditioning

For a proper, effective and safe reconditioning of the myRing Junior, myClip Junior and their extremities read the Cleaning, Disinfection and Sterilization Instructions at www.polydentia.com.



QR instructions
Cleaning and
Sterilization
Guide or go to
www.polydentia.ch

application



1. Select the appropriate ring
Select the appropriate ring and extremities according to the clinical situation (see page 4).



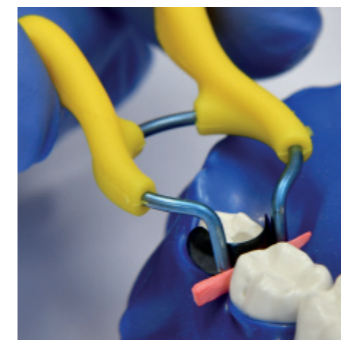
2. Prepare the cavity
Remove the carious lesion and prepare the tooth with a conservative Class II preparation. A sectional matrix can be inserted even in case of a partially broken contact.



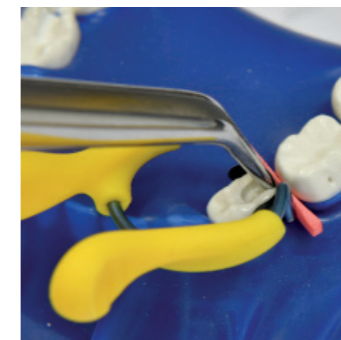
3. Place the matrix
Select an appropriate matrix band according to the tooth dimension. Place the contoured sectional matrix with the concave edge towards the occlusal margin.



4. Wedging
Select the appropriate sized wood or plastic wedge to seal the gingival margin, and insert it firmly. When needed, maintain a finger on the matrix band to avoid moving it during wedging.



5. Place the ring
Open the ring (myClip Junior by its handles with your digits / myRing Junior by ring forceps) and widen it enough to easily position it on the tooth. Place it carefully as far gingivally as possible.



6. Burnish the matrix and restore the cavity
Burnish the band against the adjacent tooth for an excellent contact, using a ball burnisher or tweezers. Restore the cavity according to the filling material manufacturer's indications.



7. Remove the sectional matrix system
Remove the ring, the wedge, and the matrix according to instructions on page 2. For easy matrix removal we suggest to use Polydentia myQuickmatrix Forceps.



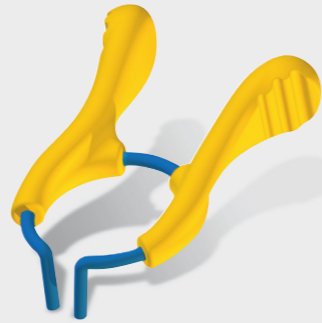
8. Finishing and polishing
With a thin bur remove small excesses then polish the restoration according to the finishing and polishing recommendations by the bur manufacturer.

select and customise your sectional matrix ring

Select a ring myJunior

myClip Junior

myClip Junior is an optimal solution for easy and quick placement. This ring doesn't need forceps, in fact it can be placed directly with one's own fingers.



myRing Junior

myRing Junior is the smallest Polydentia sectional matrix ring, and therefore the optimal solution for the youngest patients. As all standard sectional matrix rings, it needs a pair of forceps for the placement.

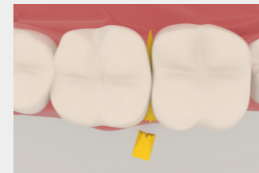
For an easy placement of the myRing Junior we recommend to use our myForceps.



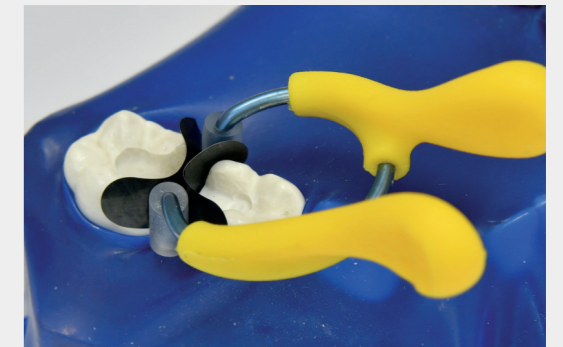
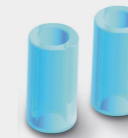
Customise your sectional matrix ring

Silicone Tubes

Use the rings myJunior with silicone tubes in case of wider class II cavities, where an increased adaptation of the matrix is necessary or when restoring two adjacent cavities. **Break the wood wedge** for an improved stability of the ring.



To accommodate the ring with silicone tubes break the wood wedge.



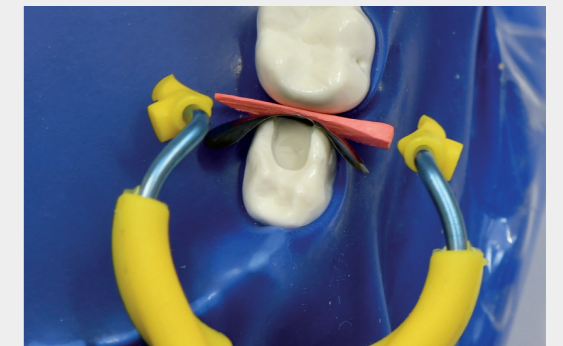
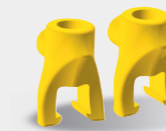
or

myTines Junior

myClip and myRing Junior in combination with myTines Junior provide outstanding stability of the ring even in case of very young and small primary teeth.

How to position myTines Junior:

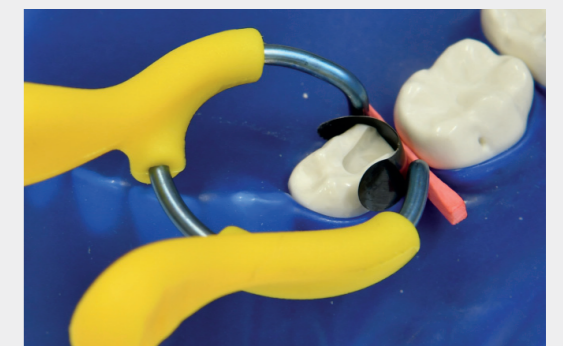
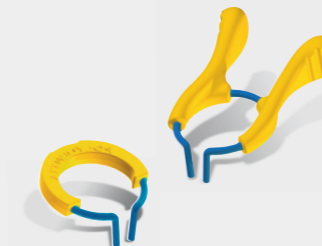
- 1 - insert the extremities into the ring ends with the orientation index facing buccally and palatally (as shown in the image beside)
- 2 - turn the extremities so that the forked gaps align with the wedge. Firmly hook myTines Junior on the wedge once positioned



or

No extremities

The rings myJunior can be used without extremities in case of small class II cavities.



select an appropriate sectional matrix

Young, small
primary molars



Junior LumiContrast Matrices
Heigth: 3.75 mm
Thickness : 0.04 mm

Young, small
primary molars



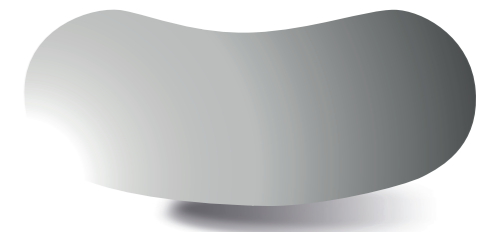
Junior Quickmat Matrices
Heigth: 3.75 mm
Thickness : 0.04 mm

Primary molars
Young permanent premolars



LumiContrast Matrices
Heigth: 5 mm
Thickness : 0.04 mm

Primary molars
Young permanent premolars

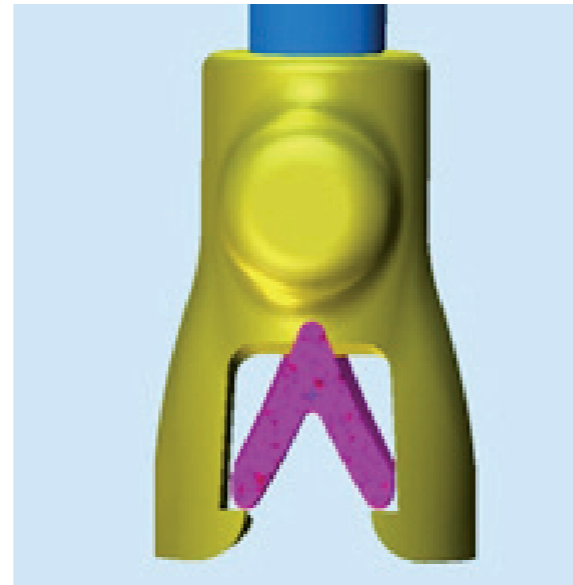


Quickmat Matrices
Heigth: 5 mm
Thickness : 0.04 mm

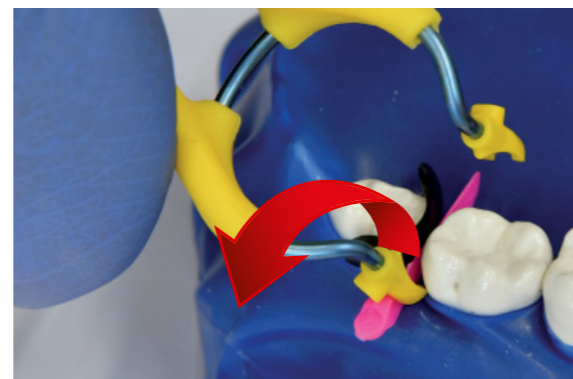
how to remove

myClip Junior & myRing Junior
with myTines Junior

Removal of myJunior rings from a PLASTIC myWedge

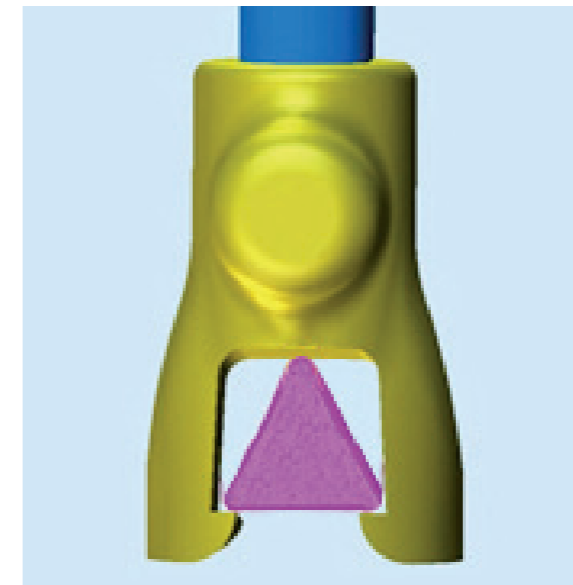


myTines Junior are developed to firmly hook on the wedge. Incorrect removal might cause the detachment of myTines from myClip Junior/myRing Junior.

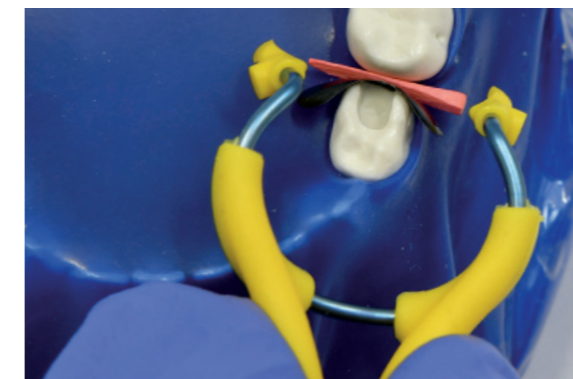


- 1- Open the rings myJunior and let the lingual/palatal ring extremity myTines Junior slide out from the plastic wedge.
- 2- Rotate the ring to unhook the buccal ring extremity myTines Junior.

Removal of myJunior rings from a WOODEN wedge



myTines Junior are developed to firmly hook on the wedge. Incorrect removal might cause the detachment of myTines from myClip Junior/myRing Junior.



- 1 - Open the rings myJunior and let both lingual/palatal and buccal ring extremities myTines Junior slide out from the wooden wedge.

kit content refills and accessories



use only
with
rubber
dam 

kit content

myJunior Kit - REF 6330

- 1 pc. myClip Junior
- 1 pc. myRing Junior
- 5 pairs Cylindrical Silicone Tubes
- 5 pairs myTines Junior
- 40 pcs. LumiContrast Sectional Matrices, Premolar 0.04mm / 5mm
- 40 pcs. Junior LumiContrast Sectional Matrices, 0.04mm / 3.75mm
- 50 pcs. Quickmat Sectional Matrices, Premolar 0.04mm / 5mm
- 50 pcs. Junior Quickmat Sectional Matrices, 0.04mm / 3.75mm
- 50 pcs. Pinky Wood Wedges, 11mm (XS)
- 50 pcs. Wood Wedges, 12mm (S)
- 50 pcs. myWedges XS
- 50 pcs. myWedges S

refills



REF 6335
myClip Junior,
2 pcs.



REF 6336
myRing Junior,
2 pcs.



REF 6333
myTines Junior,
15 pairs



REF 5711
Silicone Tubes,
15 pairs



REF 6708
Junior LumiContrast Sectional
Matrices, 0.04mm / 3.75mm
70 pcs.



REF 6705
LumiContrast Sectional Matrices,
Premolar 0.04mm / 5mm
70 pcs.



REF 5708
Junior Quickmat Sectional
Matrices, 0.04mm / 3.75mm
100 pcs.



REF 5705
Quickmat Sectional
Premolar 0.04mm /
100 pcs.



REF 5011
Pinky Wood Wedges,
11 mm (XS), 200 pcs.



REF 5012
Wood Wedges,
12 mm (S), 100 pcs.



REF 7101
myWedge,
Extrasmall (XS), 100 pcs.



REF 7102
myWedge,
Small (S), 100 pcs.



accessories









myQuickmatrix Forceps
REF 5703



myForceps
REF 5707



symbols

- REF**
- LOT**
- 
- 
- 
- 
- Rx Only**
- 
- 
- 
- 
- 